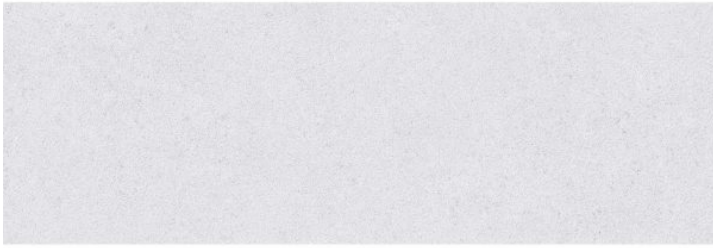


COMPORTA**Comporta Blanco 30X90.2R**

PRICE / M2 (VAT INCLUDED)

**CHARACTERISTICS**

Finish: Natural

Boxes / Pallet: 51

Rectified sides

Kg / Box: 23

Style: Stones

Kg / Pallet: 1164

Degree of detonation: V3 (Medium)

Material: White body wall tile

Pieces / Box: 5

M2 / Box: 1.35

M2 / Pallet: 68.85

**Installation**

Installation: Coating

White Body**White paste**

Suitable to tile indoor walls such as bathrooms and kitchens.



mm

**Destonified**

Comporta

Tranquilidade Serenity and harmony in white body ceramic cladding, inspired by the magnificent light and fine sands of the Atlantic coast. Step into the serenity and harmony of the new Comporta collection of white body ceramic wall tiles, a choice that reflects the beauty of the Atlantic coast, its calm and simplicity, and the intimate connection with nature. Inspired by magnificent light and fine sands, the white, sand and grey finishes invite you to create unique combinations on the walls, enhancing the contrast or generating a balanced symbiosis that highlights the elegance in every corner. The Comporta collection becomes a reflection of wellbeing, evoking the tranquillity of earthy elements, which in turn favours the design of welcoming and luminous atmospheres in neutral tones. Each meticulously created piece expresses the very essence of the place that gives it its name, mentally transporting you to the serenity of the Atlantic beaches. The Avalon series flooring and the Comporta wall covering form a perfect combination in terms of aesthetics and shades, creating a complete solution for covering and embellishing the spaces in the home.



#technology_text

White Body**White paste**

Suitable to tile indoor walls such as bathrooms and kitchens.